

# LMAX TRADER INTERACTION GUIDE

VERSION 1.01 | 23-Jun-11

LMAX Internal distribution only  
Sarah Howell – User experience designer

**LMAX**TRADER

## Displaying Market views in a Quick ticket view

Quick tickets allow the user to quickly enter into a trade from a one click action.

The instruments displayed in the quick ticket window are determined by the tab that is selected. The user can then switch views between the list view and the quick tickets using the 'View as' bar.

Users can view instruments as a quick ticket in all the tabs including the watchlist.

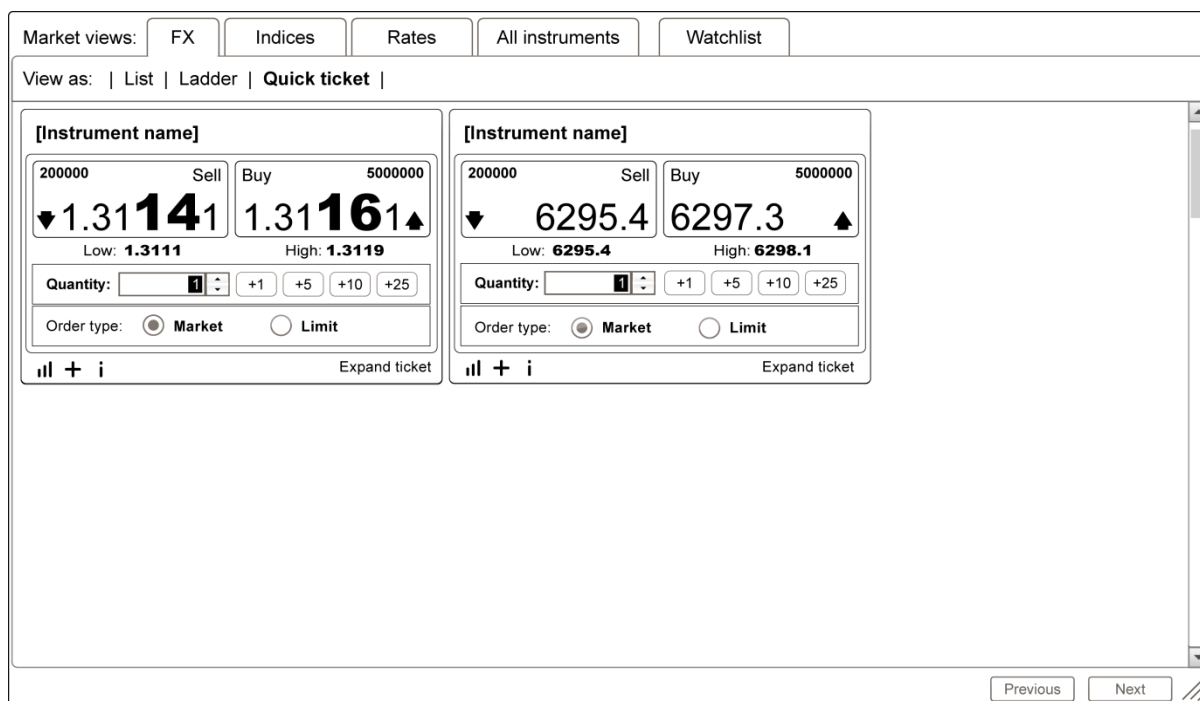
### Switching to the quick tickets view

The quick ticket view gives the user a shortened deal ticket view for all the instruments in a tab. The user can switch between views by using the 'View as' bar and selecting the quick tickets link.



### Quick tickets in the window

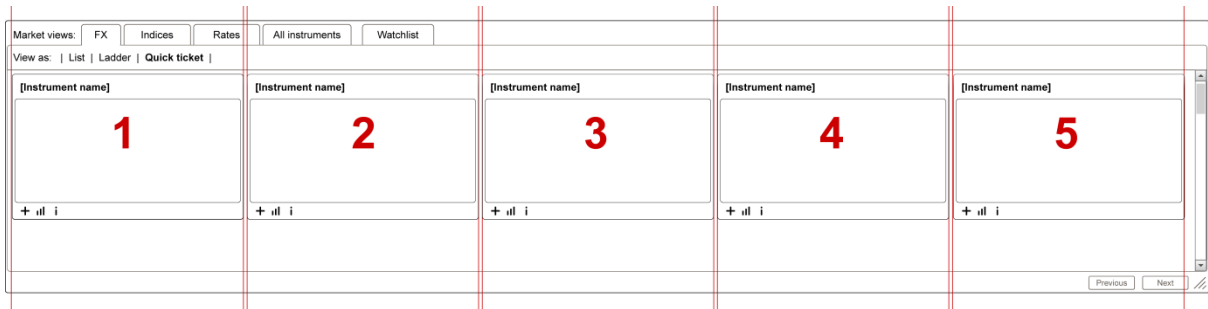
The instruments are sorted alphabetically.



### Layout of quick tickets in the window

The quick tickets are displayed in rows. The number of instruments in the row is determined by the width of the quick ticket window.

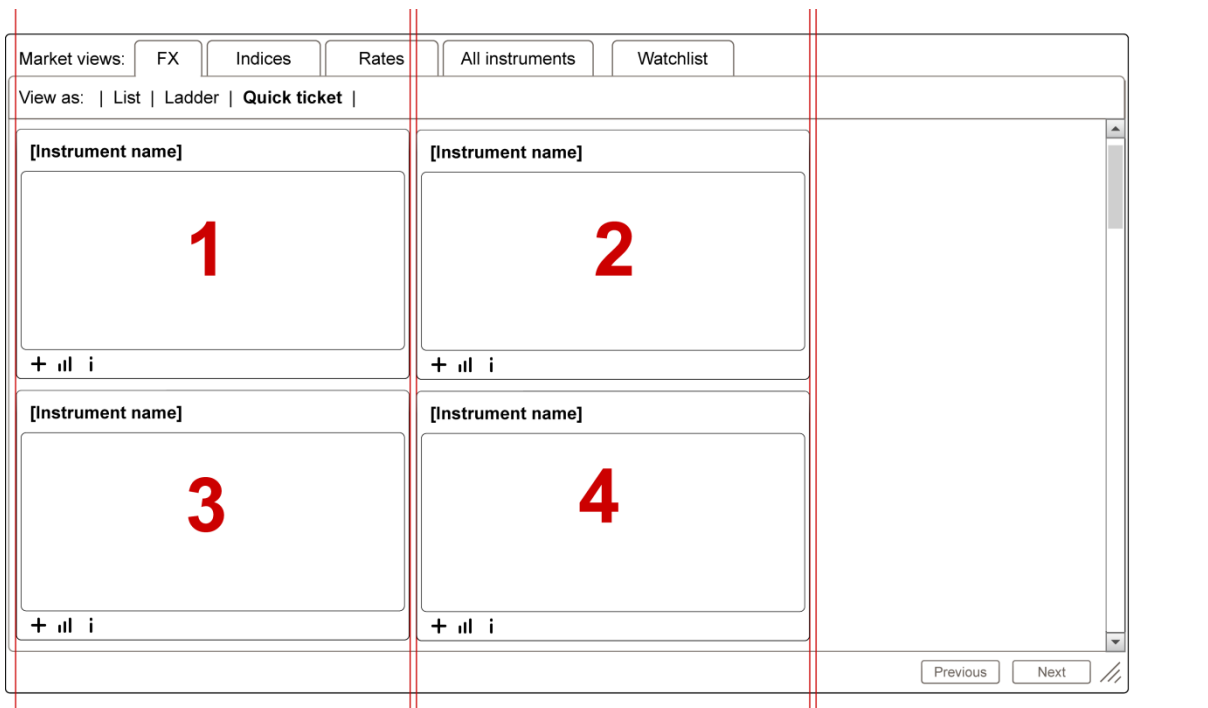
If, for example, the number of instruments in the quick ticket window is five and the window is wide enough then all 5 quick tickets would be displayed in a single row.



If, however, the window will only fit two instruments across then the windows should flow onto another row and so on until the last instrument is displayed. The window may scroll vertically but not horizontally.

In some cases there may be a blank space to the right side of the window where there is not quite enough to fit the width of a quick ticket.

The width of a quick ticket is 315px wide with 5px padding between tickets and the window frame.



## To enter into a trade using a quick ticket

The image displays two screenshots of a trading interface. The top screenshot shows a 'quick ticket' for an instrument. It features a title bar with '[Instrument name]', a sell button with a quantity of 200,000 and a price of 1.31141 (with a downward arrow), and a buy button with a quantity of 500,000 and a price of 1.31161 (with an upward arrow). Below the buttons, it shows 'Low: 1.3111' and 'High: 1.3119'. A quantity field is set to 1, with quick quantity buttons for +1, +5, +10, and +25. The order type is set to 'Market'. At the bottom, there are three icons (a bar chart, a plus sign, and an information icon) and an 'Expand ticket' button.

The bottom screenshot shows a 'full deal ticket' for the same instrument. It has the same layout as the quick ticket but with different prices: the sell price is 6295.4 and the buy price is 6297.3. The low price is 6295.4 and the high price is 6298.1. The quantity field is still 1, and the order type is 'Market'. The 'Expand ticket' button is present at the bottom right.

Callouts provide the following information:

- Instrument title:** [Instrument name]
- Order quantity:** 200000 (Sell) and 500000 (Buy)
- Price indicator arrow:** Downward arrow for Sell, upward arrow for Buy
- Significant figures are highlighted in FX:** The last two digits of the price (141 and 161) are highlighted.
- Low and high prices shown:** Low: 1.3111, High: 1.3119
- Min contract size is set in quantity:** The quantity field is set to 1.
- Default type is set to market:** The Market order type is selected.
- Button that will open long deal ticket:** The 'Expand ticket' button.
- Clicking on the Sell button enters a Sell order for the quantity set in the field.**
- Quick quantity buttons:** +1, +5, +10, +25
- Add to watchlist icon, Display chart:** The bar chart icon in the footer.

- **Instrument name:** The instrument name is displayed in the window title bar
- **Access buttons:** If the user wants to display a chart, or add the instrument to the watchlist, or open the instrument information window they can click on the three access icons in the footer of the window.
- **Opening a full deal ticket:** to open a deal ticket from the quick tickets view the user can click on the 'expand ticket' button and the deal ticket will open for the selected instrument.
- **Best price:** The Sell and Buy buttons display an updating best price for the sell side and the buy side.
- **Quantity already in the book:** The number of contracts at the best price is displayed in the top corner of the button, above the price indicator arrow.
- **Low and High prices:** The Low and High prices for the day are displayed underneath the buttons

- **Quantity:** The user has to enter in the quantity for the number of contracts that they want to enter an order for; the user can use either the quick quantity buttons or enter the number using the keypad.
- **Order type:** The order type is by default to market. If the user wants to enter a limit price at the price displayed in the button then they can select the limit radio button.
- **To enter an order** once the quantity and type are set, the user just clicks on the Sell or the Buy button at the top of the window.
- **Once the button is clicked**, the pre-order confirmation is displayed unless it has been dismissed permanently by the user. When either of the confirmation messages is displayed the Sell and Buy buttons are greyed out and an order for that instrument cannot be entered into the market.